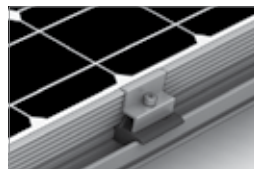
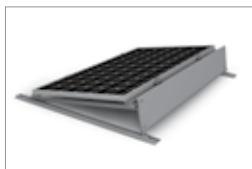
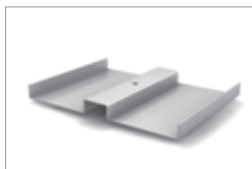


Mounting systems for solar technology



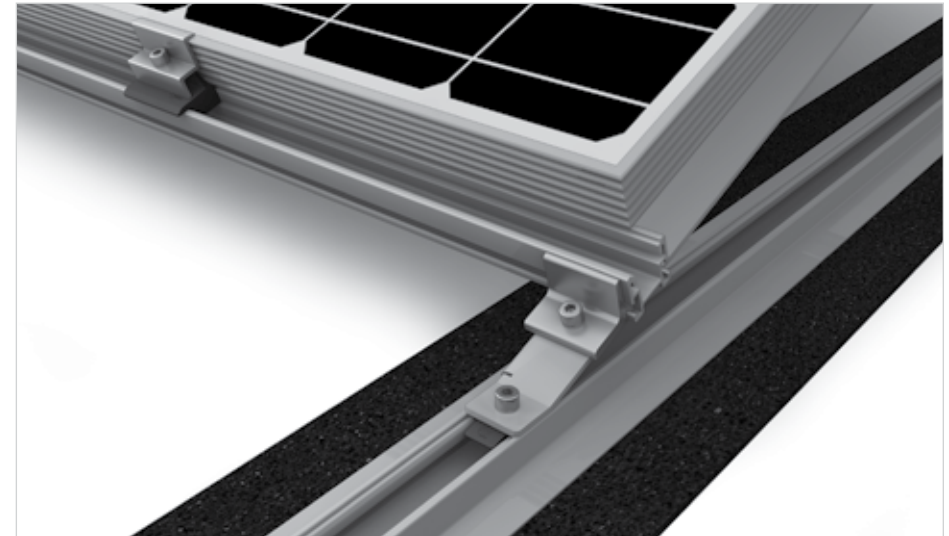
K2 SYSTEMS
FLAT ROOF SYSTEMS
S-LEVEL SYSTEM 2.11

S-LEVEL SYSTEM 2.11

- Low ballast on-roof system with south orientation
- For roofs with low ballast potential
- Used on roofs with or without parapet
- Available with or 20 °elevation angle
- Installation-friendly thanks to partially pre-assembled components and screw connections from above
- Option of K2 flat rail or K2 SpeedRail as base
- Aerodynamically optimised with wind breaker on reverse enabling low ballast
- K2 building protection mats, specially coated for secure and durable roof overlay on virtually all membrane roofs
- K2 Scale for installation of ballast
- Modular structure suitable for any system size

Technical data

Field of application	Flat roof
Roofing	Membrane and bitumen roof
PV modules	Suitable for all standard framed module types
Module orientation	Horizontal
Material	Aluminium (EN AW-6063 T66)
Connecting elements	Stainless steel A2-70
Weight / m ² module surface	Without module, without ballast approx. 7 kg
Roof connection	Overlay with potential ballast; no roof penetration
Static principles	Calculation principles in accordance with Eurocode 9 - dimensioning and construction of aluminium frames using wind channel tests; load assumption in accordance with DIN 1055/ Euro code 1
System components	S-Level 2.11 elevation angle, K2 SpeedRail or flat rail, wind-breaker, K2 Crossrail, mid and end clamp sets, M K2



Detail illustration - S-Level System 2.11



Explosion drawing - S-Level System 2.11

SERVICE-HOTLINE
+49 (0)7152 3560-0
www.k2-systems.com

Product Sheet S-Level 2.11 | GB1 | 0312 | Subject to change
Product illustrations are exemplary illustrations and may differ from the original.

