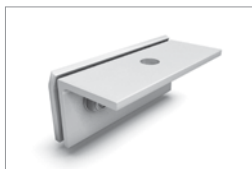
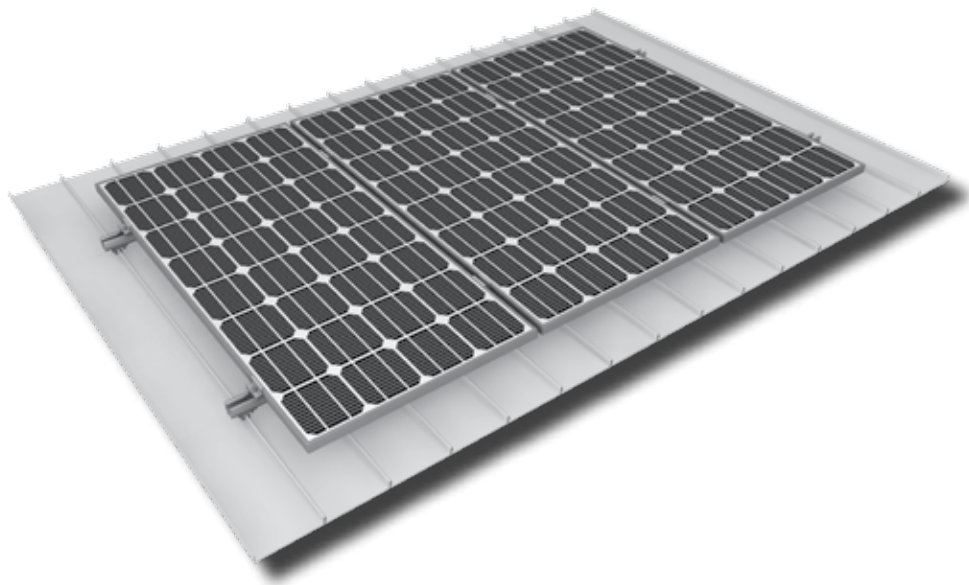


Mounting systems for solar technology



K2 SYSTEMS
SLOPED ROOF SYSTEMS
SEAM METAL SYSTEM

SEAM METAL SYSTEM

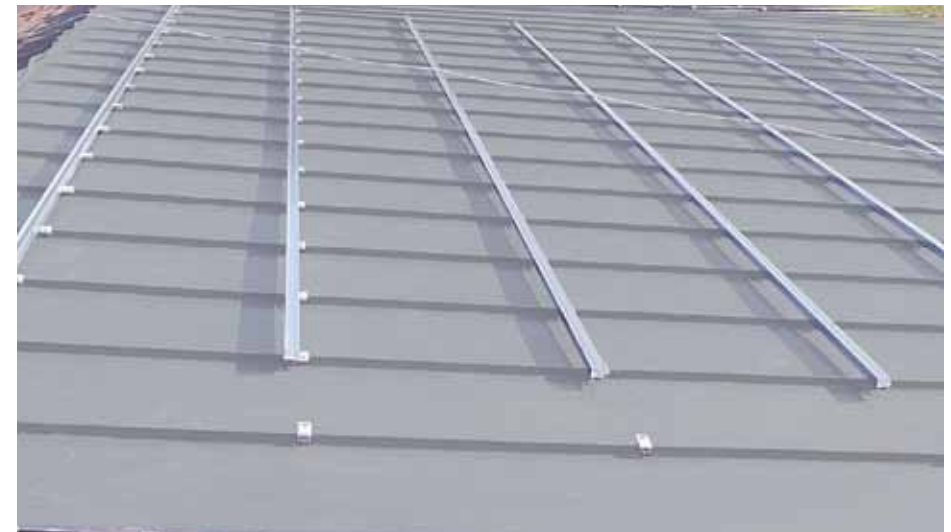
- For roofs with different profiled seamed metal roofing
- Fastening with clamps below the seam joint
- No roof penetration required
- Strong holding forces
- Easy and flexible assembly
- Connection with the K2 SolidRail range of rails
- Can also be installed in cross bracing (e.g. with CrossRail)
- Clamps available in stainless steel or aluminium
(Clamps in other materials for different roof types on request)
- Modular structure suitable for any system size

Technical data

Field of application	Sloped roof
Roofing	Seam metal
PV modules	Suitable for all standard module types
Module orientation	Vertical / horizontal (with cross bracing)
Material	Aluminium (EN AW-6063 T66)
Connecting elements	A2-70 stainless steel, aluminium
Roof connection	Screw connection/ clamping
Static principles	Determination of load capacity values by laboratory tests; load assumption in accordance with DIN 1055/ Eurocode 1
System components	K2 metal clamps, K2 SolidRail range, end and middle clamp sets, T-bolts, M K2, self-locking nut



Elpo | Bruneck - Italy
System: 66,24 kW | Seam metal with S5!



Elpo | Neumarkt - Italy
System: 39,60 kW | Seam metal with S5!

SERVICE-HOTLINE
+49 (0)7152 3560-0
www.k2-systems.com

Product Sheet Seam Metal| GB1 | 0312 | Subject to change
Product illustrations are exemplary illustrations and may differ from the original.

