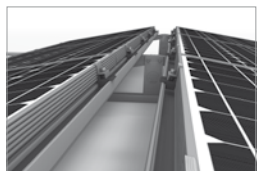
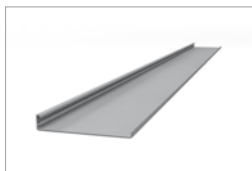


Mounting systems for solar technology



K2 SYSTEMS
FLAT ROOF SYSTEMS
D-LEVEL SYSTEM

D-LEVEL SYSTEM

- Roof mounted system for east-west facing installation
- For roofs with low ballast potential
- Optimal roof layouts, no shading issues
- With the K2 LevelRail
- Slight, two-sided 10° elevation
- High flexibility - for all framed module types
- Reduced assembly time due to pre-mounted components
- Very attractiv price-performance ratio
- Tested in a wind tunnel by leading structure aerodynamicists



Frankental | Germany
System: 58 kW | D-Level System

Technical data

Field of application	Flat roof
Roofing	Membrane and bitumen roof
PV modules	suitable for all standard framed module types
Module orientation	Horizontal
System orientation	Flexible double-sided any orientation possible
Material	Aluminium (EN AW-6063 T66)
Connecting elements	Stainless steel A2-70
Weight/m ² module surface	Without module, without ballast approx. 3.5 kg
Roof connection	Overlay with potential ballast; no roof penetration
Static principles	Calculation principles in accordance with Eurocode 9 - dimensioning and construction of aluminium structures using wind tunnel tests; load assumption in accordance with DIN 1055/ Eurocode 1
System components	K2 LevelRail, K2 SolidRail Light, D-Level Set, End Clamp, AddOn, M K2



Hamburg | Germany
System: 70 kW | D-Level System

SERVICE-HOTLINE
+49 (0)7152 3560-0
www.k2-systems.com

Produktblatt D-Level System | GB1 | 0512 | Subject to change
Product illustrations are exemplary illustrations and may differ from the original.

